

## GALERIE RÜDIGER SCHÖTTLE

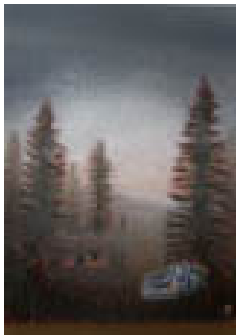
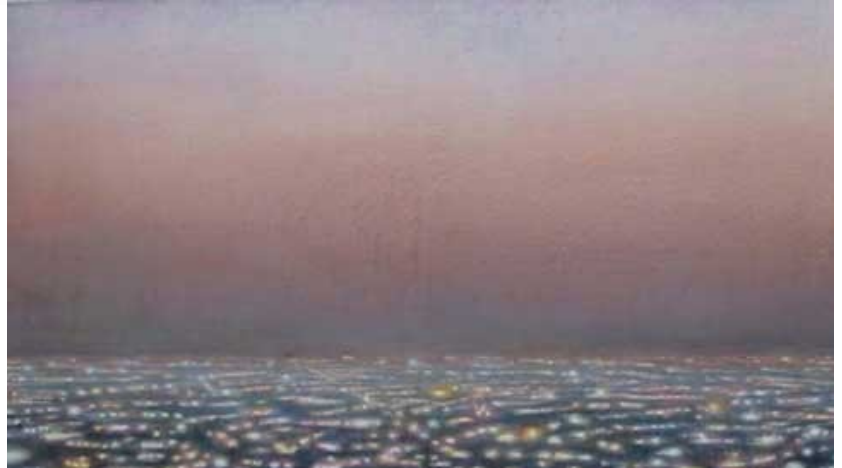
Amalienstraße 41 D-80799 München Telefon +49-(0)89-33 36 86 Fax +49-(0)89-34 22 96

**Armin Boehm**

**Martin Boyce**

16th April – 14th May 2005

Opening: Friday, 15th April, 7.00 p.m.



**Armin Boehm**, born in Aachen in 1972, studied at the Art Academy in Düsseldorf as a *Meisterschüler* under Professor Jörg Immendorff. Boehm first became known through his large-format, fictitious landscape paintings: boundless, shimmering urban landscapes under imposing, unreal starry skies. Surrealistic details, which often seem to loom out of a mist, and motifs such as smashed tree trunks, car wrecks, mountain huts or stags strengthen the impression of a fictitious, dreamlike scenery. Whilst Armin Boehm increasingly uses motifs from the worlds of photography and the cinema, combining them from the widest conceivable diversity of media, they are all subordinated to the general atmosphere of the painting, which takes absolute priority. The scenes he depicts possess the hazy quality of distant memories. They tell a story, but it is too vague for the viewer to comprehend. The paintings convey a magical mood, not least through the artist's use of light. The co-existence of man and nature seems harmonious and colourful only at first glance. Indeed, a dark, menacing component pervades the paintings of Armin Boehm.

Armin Boehm is exhibiting his new works on the theme of "Homeland" at the Schöttle Gallery, including large-format views of Neuschwanstein and Schloss Berg in Bavaria. Armin Boehm lives and works in Berlin.



## GALERIE RÜDIGER SCHÖTTLE

Amalienstraße 41 D-80799 München Telefon +49-(0)89-33 36 86 Fax +49-(0)89-34 22 96



**Martin Boyce**, born in Glasgow in 1967, processes modernist design objects and fragments, adopting an investigative approach which is motivated both aesthetically and culturally. To this end, Martin Boyce utilizes the repertoires of forms and materials of such significant architects and designers as Arne Jacobsen, Charles and Ray Eames, Mies van der Rohe and R.M. Schindler. The objects are robbed of their original aesthetic and function and transformed into temporally and spatially dynamic installations that remind us of visions of modernism from a "better future" and at the same time make us aware that the latter has still not arrived. His works are focussed primarily on European and American modernist architecture and design. "If you translate a style from one historical epoch into another," says Martin Boyce, "you can resurrect the *zeitgeist*, the social and cultural circumstances of that epoch. On this journey through time, however, the aesthetic develops its own ideological messages, based, for example, on notions of taste and exclusivity." Martin Boyce creates new, hitherto unknown spaces that mediate between the ideas of yesterday and today.

For the exhibition at the Schöttle Gallery, he has installed two new, hanging "tree sculptures".

